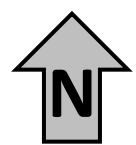
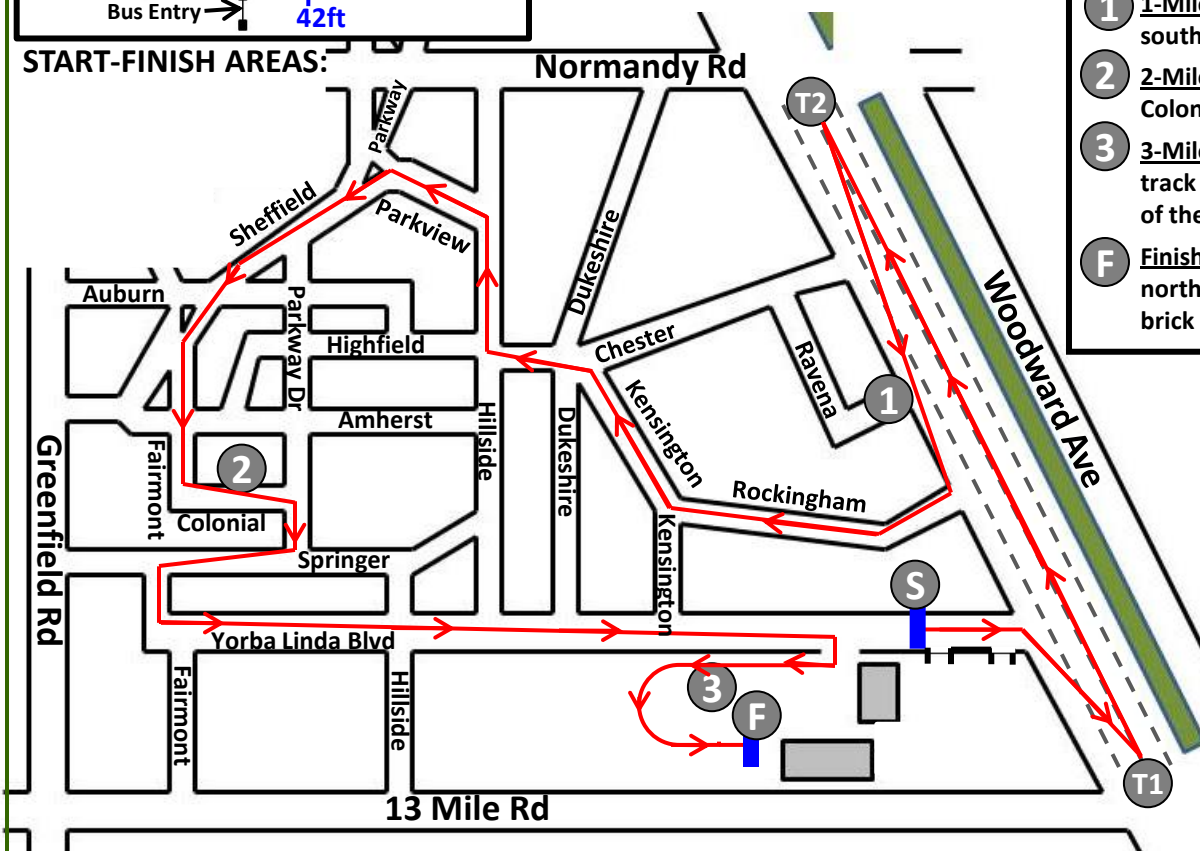


# Cruise In Shoes 5K Royal Oak, Michigan

USATF Certification MI14024SH  
Effective 7-2-14 to 12-31-24

- S** Start: Yorba Linda Blvd, 20ft 2in west of the west entrance to Beaumont Medical Clinic.
- T1** Turnaround #1: Woodward, just north of 13 Mile Rd, lane line between 2nd & 3rd lanes, 10ft 8in north of sewer cap on northwest corner. (4ft south of No Turn On Red sign)
- T2** Turnaround #2: Woodward, just south of Normandy Rd, middle of southbound lanes, at the light pole in center of traffic median.
- 1** 1-Mile: Woodward Ave (southbound), 19ft 1in south of manhole cover at Ravana St.
- 2** 2-Mile: 19ft 7in west of the driveway at 4118 Colonial St.
- 3** 3-Mile: Track backstretch, along the cinder track curb, 2ft west of the 21st fence post west of the pedestrian gate.
- F** Finish: Shrine HS Track, in the grass, 42 feet north of base of bleachers, 37ft 5in east of the brick columns at bus entrance.

START-FINISH AREAS:



Course Measurement  
completed by: Joe Baldwin